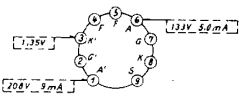


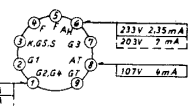
**ECC 85**

6.3V 0.435A



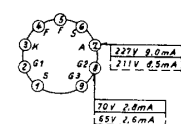
**ECH 81**

6.3V 0.3A



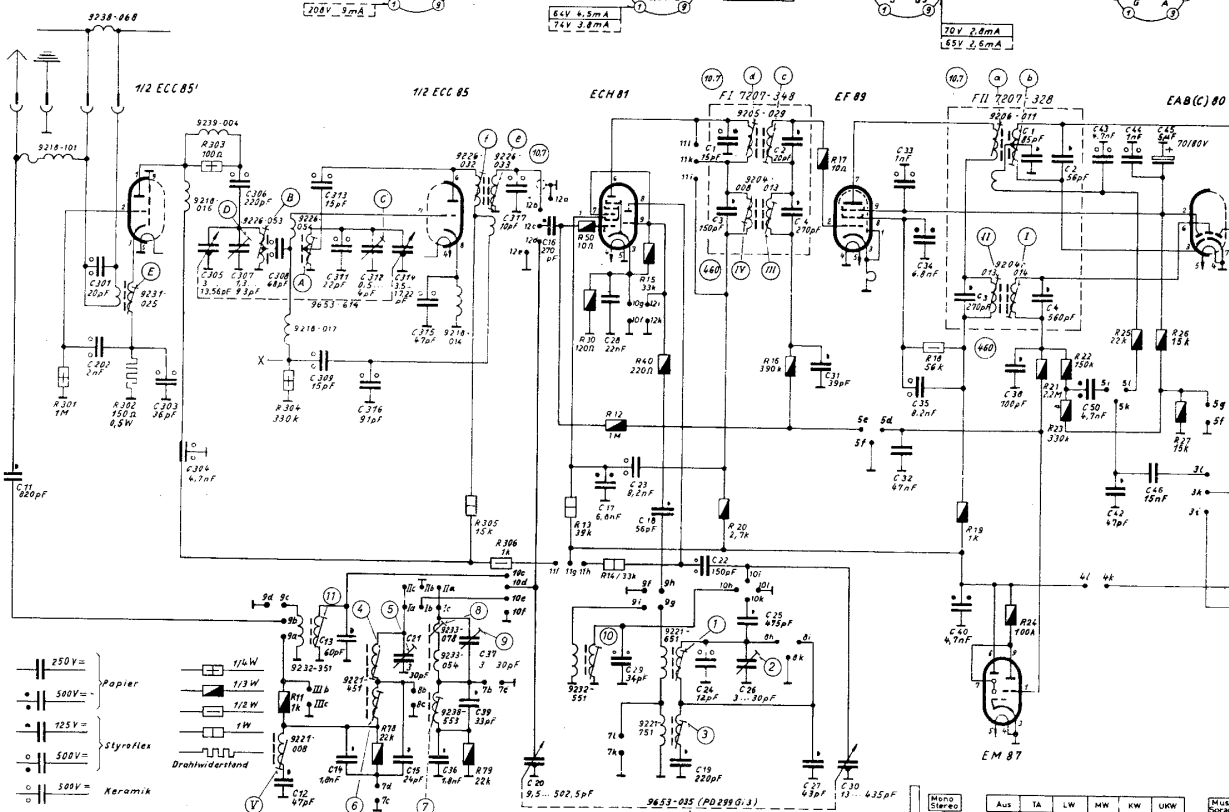
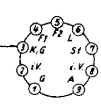
**EF 89**

6.3V 0.2A



**EM 87**

6.3V 0.3 A



- 250V = Papier
- 500V = Styroflex
- 1000V = Drahtwiderstand
- 1000V = Keramik

Wellenbereiche LW 145 ... 350 kHz  
 MW 530 ... 1620 kHz  
 KW 5.9 ... 16 MHz  
 UKW 87 ... 104 MHz



FM - Spulensatz Nr. 7635-034 ZF 10,7 MHz  
 AM - Spulensatz Nr. 7615-116.01 ZF 460 kHz

Spannungen mit Grundig-Röhrenvoltmeter gemessen. Maßwerte gelten bei MW DRW ohne Signal an der Antenne

Änderungen vorbehalten

Mono Stereo	Aus	1A	LW	MW	KW	UKW	MUSIK Sprung																																																																																													
1	1	2	3	4	5	6	7	8	9	10	11	12	13	14	15	16	17	18	19	20	21	22	23	24	25	26	27	28	29	30	31	32	33	34	35	36	37	38	39	40	41	42	43	44	45	46	47	48	49	50	51	52	53	54	55	56	57	58	59	60	61	62	63	64	65	66	67	68	69	70	71	72	73	74	75	76	77	78	79	80	81	82	83	84	85	86	87	88	89	90	91	92	93	94	95	96	97	98	99	100

Gezeichnete Stellung: Gerät „Aus“

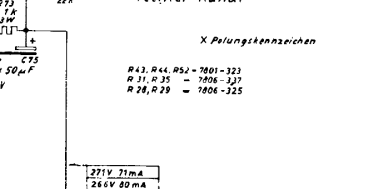
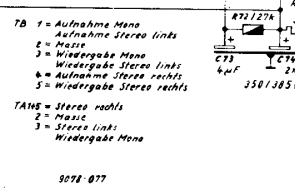
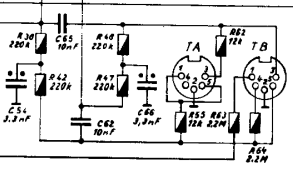
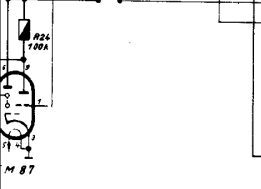
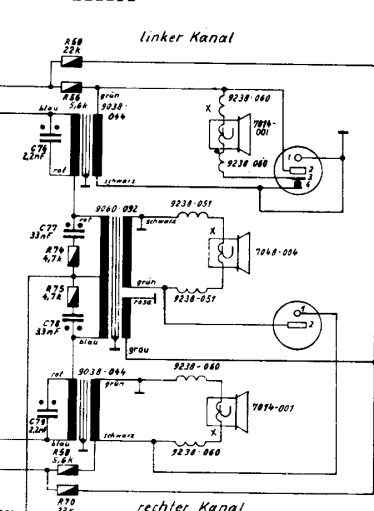
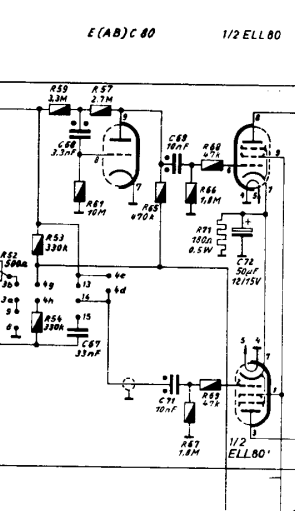
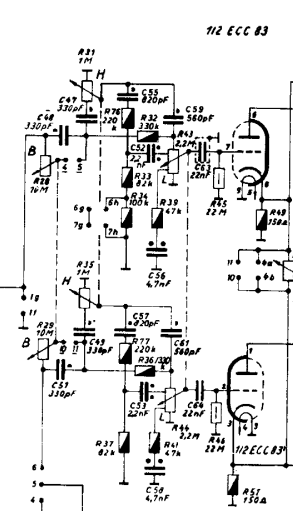
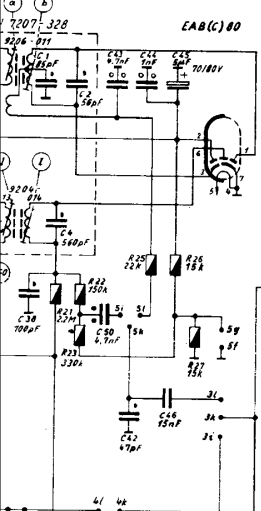
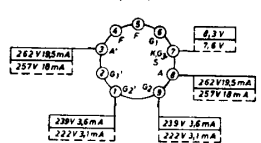
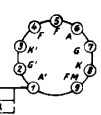
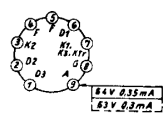
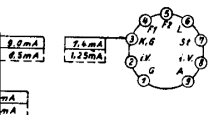
C	11	301	302	303	304	305	306	307	308	309	310	311	312	313	314	315	316	317	318	319	320	321	322	323	324	325	326	327	328	329	330	331	332	333	334	335	336	337	338	339	340	341	342	343	344	345	346	347	348	349	350	351	352	353	354	355	356	357	358	359	360	361	362	363	364	365	366	367	368	369	370	371	372	373	374	375	376	377	378	379	380	381	382	383	384	385	386	387	388	389	390	391	392	393	394	395	396	397	398	399	400
R		301	302	303	304	305	306	307	308	309	310	311	312	313	314	315	316	317	318	319	320	321	322	323	324	325	326	327	328	329	330	331	332	333	334	335	336	337	338	339	340	341	342	343	344	345	346	347	348	349	350	351	352	353	354	355	356	357	358	359	360	361	362	363	364	365	366	367	368	369	370	371	372	373	374	375	376	377	378	379	380	381	382	383	384	385	386	387	388	389	390	391	392	393	394	395	396	397	398	399	400

EM 87  
6.3V 0.3 A

EABC 80  
6.3V 0.45A

ECC 83  
6.3V 0.3 A

ELL 80  
6.3V 0.55A



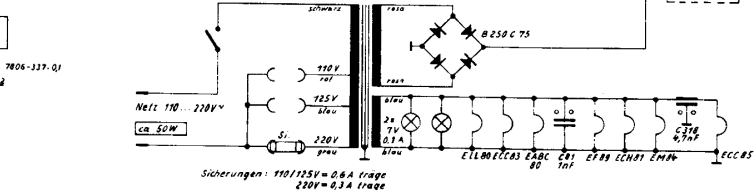
TB 1 = Aufnahme Mono  
2 = Aufnahme Stereo links  
3 = Wiedergabe Mono  
4 = Wiedergabe Stereo links  
5 = Aufnahme Stereo rechts  
6 = Wiedergabe Stereo rechts

TAB = Stereo rechts  
2 = Masse  
3 = Stereo links  
5 = Wiedergabe Mono

X Polungskennzeichen  
R 13, R 44, R 51 = 7001-323  
R 31, R 35 = 7008-327  
R 28, R 29 = 7008-325

Aus	TA	LW	MW	KW	UW	Musik	Sprache
1	2	3	4	5	6	7	8
9	10	11	12	13	14	15	16
17	18	19	20	21	22	23	24
25	26	27	28	29	30	31	32

Schalt-  
richtung



Sicherungen: 110/125V = 0.6 A frage  
220V = 0.3 A frage

Gezeichnete Stellung: Gerät „Aus“

38	50, 43, 2, 44, 45, 46,	48	59, 53, 50,	61	67, 68,	69, 71,	73, 72, 74, 01,	75, 76, 78, 77, 70, 318,
24,	21, 23, 22,	28, 29, 31,	36, 34, 35,	37, 33, 48, 43,	41, 44,	46, 51, 63,	56, 70,	58, 70,
1	4	2	25, 26, 27,	20, 29, 31,	36, 33, 34, 32, 38, 39, 43, 55,	45, 62, 64, 49, 52,	53, 54, 58, 61, 59,	65, 66, 67, 71, 68, 69, 72,
								73,
								56, 60, 74, 75,

25162He

GRUNDIG WERKE GMBH FÜRTH (BAY.)

AM/FM Super 3395 Stereo  
(11-1263-1101/S)